



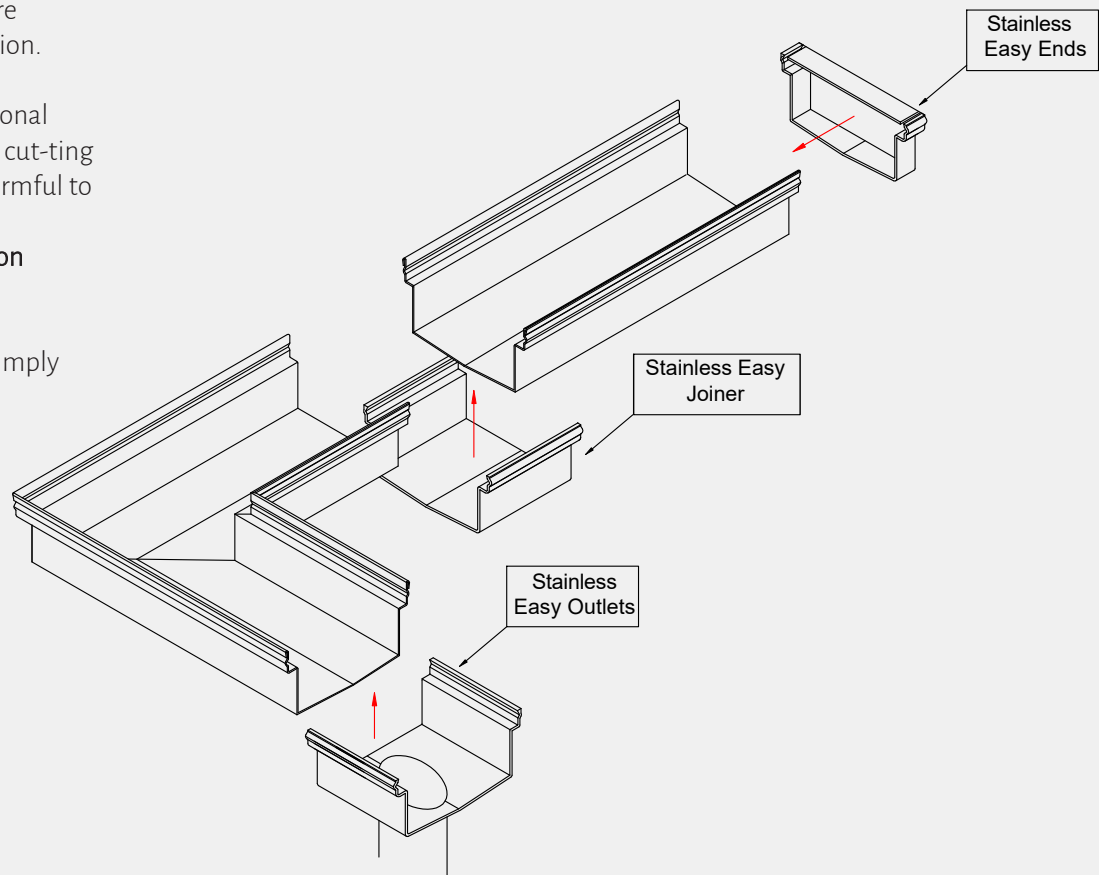
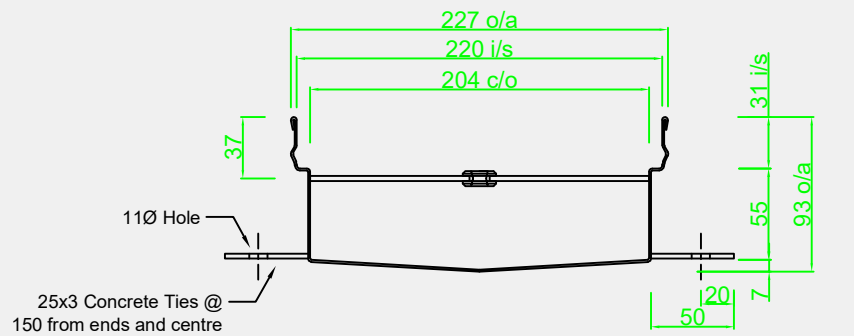
HEELGUARD GRATING™

Proudly Australian Made, Owned and Operated

CLICK DRAIN 200 SERIES

The Future of Plumbing!

- **2 & 1 metre Channel Lengths**
For faster and more accurate install procedures.
Light weight compared to traditional polymer / concrete drain sections.
- **Tray with HEELGUARD**
Channel lengths do not crack or shatter when dropped. Revolutionary 'click' together channel lengths and components.
- **90 & 45 Corners**
90 deg and 45 deg sections are standard for change of direction.
- **Outlet**
Able to be cut using conventional tools, std hole saws and inert cut-ting disc materials that are not harmful to the environment.
- **Tray with Pressed Grate Option**
- **Joiner Section**
- **End Cap**
Drain terminating ends are simply clicked on.



www.heelguard.com.au | sales@heelguard.com.au

Heelguard Grating Australia Pty Ltd | ABN 89 122 572 141

5/12, Clarke Street, Sunshine VIC 3020 | PO Box 234, Melton VIC 3337 PH: (03) 9116 4969 | (0415) 500 485



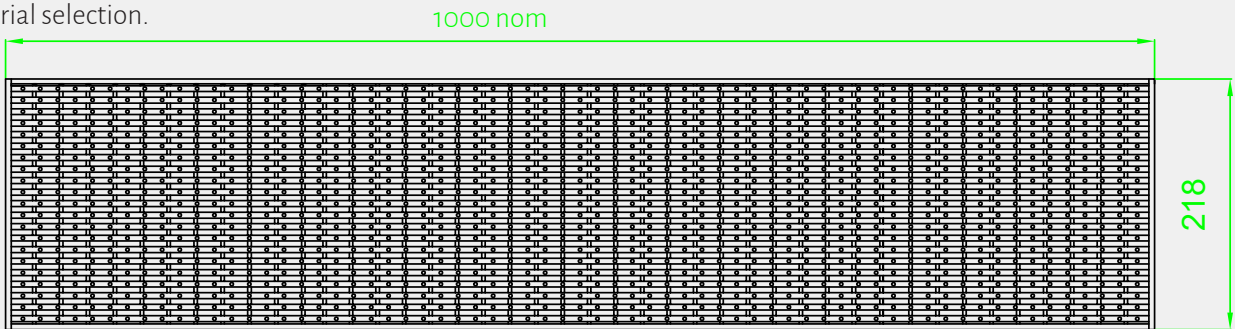
HEELGUARD GRATING™

Proudly Australian Made, Owned and Operated

CLICK DRAIN 200 SERIES

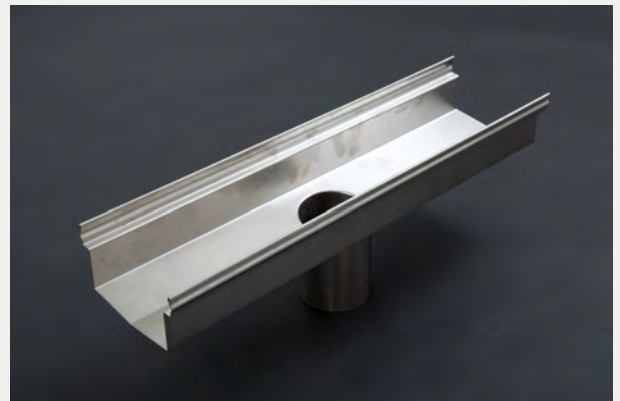
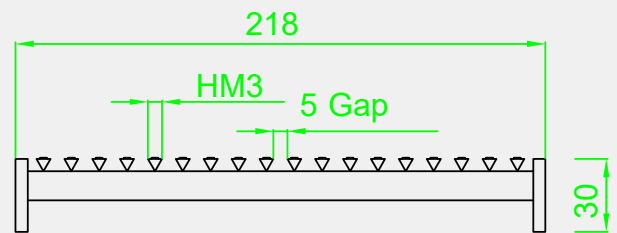
Welcome to CLICK DRAIN®

A "grate" innovation to service the drainage market using seamless technology. Designed by drainage experts, CLICK DRAIN®, developed using PAIGE STAINLESS HEELGUARD® is a full stainless steel drainage system. Superseding existing, dated methods and materials currently used in the civil linear drainage. Use this centuries old technology for ease of onsite fitting, reduced transport costs, safety and labour costs. The system utilises the popular 300 series stainless steel, mainly A.I.S.I grade 304 and 316 stainless steel into a multi form drainage channel using heelguard enhanced water flow grates, they are a chemical resistant, lightweight and timeless material selection.



Standards Compliance:

- Surface openings in pedestrian areas (AS3996)
- Slip resistance | Wet Pendulum Test (AS4586:P5)
- Slip resistance | Wet-Barefoot inclining platform test (AS4586:C)
- Slip resistance | Oil-Wet inclining platform test (AS4586: R11- Parallel) Slip resistance | Oil-Wet inclining platform test (AS4586: R12 Perpendicular)
- Wheelchair and walking cane safety (AS1428.2- Clause 9)
- Bicycle tyre penetration resistance (AS3996- Clause 3.3.6)



www.heelguard.com.au | sales@heelguard.com.au

Heelguard Grating Australia Pty Ltd | ABN 89 122 572 141

5/12, Clarke Street, Sunshine VIC 3020 | PO Box 234, Melton VIC 3337 PH: (03) 9116 4969 | (0415) 500 485